



► Model DSA

Directional Speaker Array

Federal Signal's Model DSA Directional Speaker Array provides excellent voice and tone reproduction and is ideal for overcoming high levels of industrial noise.

Design flexibility allows the user to combine up to four speaker arrays; each array will hold from two to six re-entrant speakers. Speakers have a 70° horizontal angle of dispersion, accommodating specific sound output patterns. (When vertical stacks are placed 90° apart, a 180° horizontal coverage is possible.)

The Model DSA mounting kits allow for multiple speaker arrays to be mounted on the same pole at 90° increments. The downward tilt can be adjusted by 15°. The mounting flexibility of this system allows the speakers to be pointed directly at a targeted area for more concentrated sound output.

A DSA consists of a corrosion resistant aluminum frame with fiberglass projectors and stainless steel mounting hardware. Each speaker contains a high-efficiency 100 watt driver. DSA speakers are equipped with 50' UL rated PVC shielded wire. The DSAX-1 speakers are equipped with 100' of UL rated PVC shielded wire.

Amplification, tone generation and signal timing are provided by the Model UV controller, purchased separately.

Ideal for outdoor industrial plant warning, the Model DSA speaker array allows sound coverage to be customized to each site, preventing wasted sound in and around the plant. The Model DSA provides better speech intelligibility within a coverage zone than omni-directional speaker arrays.

FEATURES

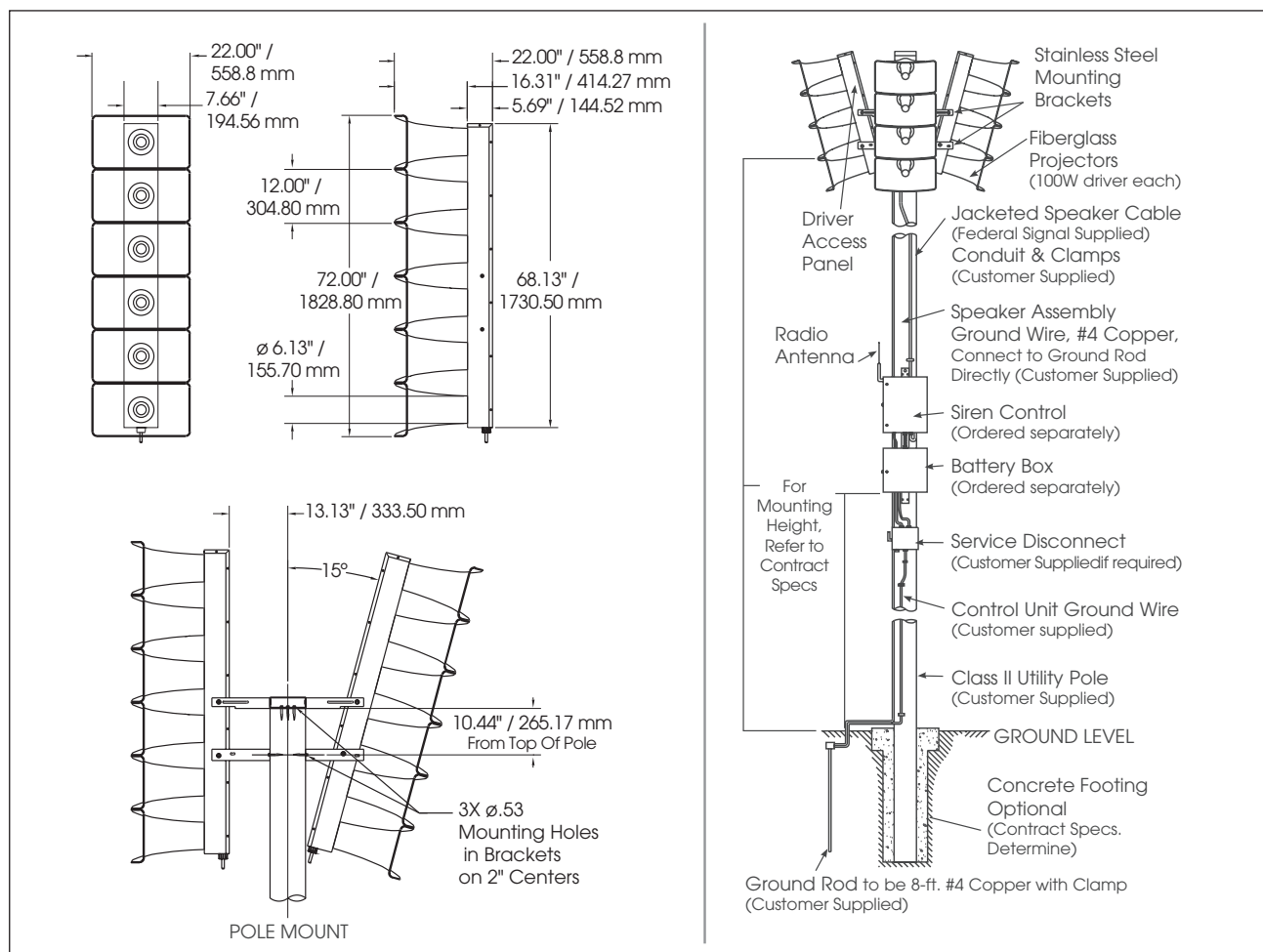
- Overcomes ambient noise of industrial environments
- Provides maximum speech recognition and tone reproduction
- Produces 111 dBc to 121 dBc @ 100'
- Two mounting kits available
- UL and cUL Listed
- Standard models include 45' of cable tail, DSAX-1 models include 94' cable tail

MODEL	NO. OF 100W SPEAKERS	TOTAL WATT	DECIBELS 100' ^{1,2}	EFFECTIVE RANGE	HEIGHT IN MM	NET WEIGHT LBS KG	SHIPPING WT LBS KG
DSA2	2	200	111 dBc	1,700'	25 635	43 19.5	127 57.6
DSA3¹	3	300	115 dBc	2,200'	46 1168.4	80 36.2	130 59
DSA4	4	400	117 dBc	2,600'	48 1219.2	95 43.1	175 79.3
DSA5¹	5	500	119 dBc	3,000'	70 1778	110 49.9	220 99.7
DSA6	6	600	121 dBc	3,400'	72 1828.8	125 56.7	230 104.3

¹ Special order, consult factory

² Based on far field measurements.

Directional Speaker Array (DSA)



SPECIFICATIONS

Color: Black projectors with Off-White Housing
Paint: TGIC – Polyester Powder Coat, highly corrosion resistant
Frequency Response: 200-2000Hz

REPLACEMENT PARTS

Description	Part Number
Driver, 100 watt	K8570063A

Considerations for system configuration:

- The DSA speaker array is used in conjunction with the UV controller. The UV houses the amplifiers that drive the DSA speaker array. Each DSA is made up of individual 100 watt speakers. FOR EXAMPLE: A DSA4 has four 100 watt speakers.
- Multiple DSA arrays can be controlled by a single UV as long as the total wattage meets or exceeds the total wattage required by the DSAs. The total watt required is the sum of all 100 watt speakers from each DSA.

HOW TO ORDER

Contact our Federal Signal Sales Engineers to design a system that meets your specific requirements.

Description	Part Number
2 speaker assembly	DSA2 ¹
3 speaker assembly (Special order, consult factory)	DSA3 ¹
4 speaker assembly	DSA4 ¹
5 speaker assembly (Special order, consult factory)	DSA5 ¹
6 speaker assembly	DSA6 ¹
Mounting Kit:	
Wall mount for one vertical support	DSAMK1
Mounting kit for one to four vertical stack(s) 90° or 180° apart	DSAMK4
Mounting kit for steel poles, one vertical stack	DSAMKSP
4.5" mounting brackets for steel pole, bracket for one vertical stack	DSAMKSPB45
2.375" mounting brackets for steel pole, bracket for one vertical stack	DSAMKSPB23

¹ Includes 45' cable tail. Order -1 after the part number for 94' cable tail.
Controller and Communications – See price list for controller and
powering options.
Batteries not included.