



- Models EN-WSSPA, EN-WSTPA and EN-CSTA

## Speakers & Strobes Emergency Notification

**Wall Mounted Speaker Strobe** – The wall mounted speaker strobe combo is UL 1638 and 1480 compliant and listed for the purpose of life safety and property protection. The strobe utilizes a Xenon flash tube which generates a high-intensity light visible from all sides with a fixed candela rating of 15/75. This device offers a choice of field selectable power taps of 1/8, 1/4, 1/2, 1, 2, and 4 watts for use with either 25 Vrms or 70.7 Vrms audio amplifiers. The frequency range of the speaker is 400-4000Hz. This device is suitable for line supervision. This device can be mounted to either the EN-SMBS (Surface Mounting Box, Square) or a 4" square X 2 1/8" deep metallic back box.

**Wall Mounted Strobe** – The wall mounted strobe with amber lens offers a dependable visual alarm for warning and emergency notification. Applications include severe weather, evacuation, emergency response, etc. This device runs on 24VDC. The candela options are 15, 30, 60, 75, and 100. These options are field selectable and tamper resistant. A die cast 4" mounting bracket is included which incorporates the popular Super-Slide™ feature that allows the installer to easily pre-wire the system and test for supervision. The product also features a locking mechanism that secures the product to the bracket without showing any screws. Installers can check the voltage drop, current draw and match it against the blue print with the included Checkmate™ Instant Voltage Verification feature. This wall strobe is UL1638 and UL464 listed and are warranted for three years from the date of purchase.

**Ceiling Mounted Strobe** – This ceiling mounted strobe offers dependable visual alarms for warning and emergency notification. This device runs on 24VDC. The candela options are 15, 30, 60, 75, and 100. These options are field selectable and tamper resistant. A standard 4" mounting plate is included which incorporates the popular Super-Slide™ feature that allows the installer to easily pre-wire the system and test for supervision. The product also features a locking mechanism that secures the product to the bracket without showing any screws. This wall strobe is UL1638 and UL 464 listed and are warranted for three years from the date of purchase. Mounting option: EN-SMBR (Surface Mounting Box, Round)

### FEATURES

- Campus, Military and Indoor Mass Notification
- UL listed
- Amber or Clear lens
- Plain housing or with 'Alert' text for additional notification
- Synchronization of strobe lights

## Speakers &amp; Strobes Emergency Notification (EN-WSSPA, EN-WSTPA and EN-CSTA)

## S P E C I F I C A T I O N S

## Ceiling or Wall Mounted Speaker

This ceiling or wall mounted speaker is designed to meet code requirements for audio voice communications. This device can be mounted to either the EN-SMBS (surface mounting box, square) or a 4" square X 2 1/8" deep metallic back box. This speaker provides a 25 or 70.7 Vrms speaker with field selectable power taps of 1/8W, 1/4W, 1/2W, 1W, 2W or 4W. It offers high quality dBA output (Intelligible). The Frequency Range is 400-4000Hz.

## Synchronization Module

The synchronization module is designed to provide an easy way to synchronize multiple strobe light flashes using only two wires in instances where a synchronized flash is required.

- Easy to Install
- Rated for 3 Amps continuous current and 5 Amps surge or inrush current
- Synchronizes to 1Hz Flash Rate
- Operates 1 Class 'A' circuit or 2 Class 'B' circuits at 3 Amps per circuit.
- UL 464 and UL 1971 Listed
- CAN/ULC S526-M87/S524-01 Compliant
- This module comes with its own back box and cover

## H O W T O O R D E R

## Description

## Part Number

## Wall Mounted Speaker Strobe

Wall Speaker/Strobe, Alert, Amber lens

**EN-WSSAA**

Wall Speaker/Strobe, Plain, Amber lens

**EN-WSSPA**

Outdoor Wall Speaker Strobe,

Alert, Amber lens

**EN-OWSSAA**

## Wall Mounted Strobe

Wall Strobe, Plain, Amber lens

**EN-WSTPA**

Wall Strobe, Alert, Amber lens

**EN-WSTAA**

Wall Strobe, Plain, Clear lens

**EN-WSTPC**

Wall Strobe, Alert, Clear lens

**EN-WSTAC**

## Synchronization Module

Synchronization Module, 3 Amps

**EN-SM**

## O P T I O N A L A C C E S S O R I E S

## Description

## Part Number

Surface Mounting Box, Round

**EN-SMBR**

Surface Mounting Box, Square

**EN-SMBS**

## Ceiling Mounted Strobe

Ceiling Strobe, Amber lens

**EN-CSTA**

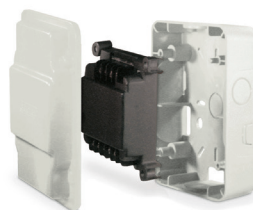
Ceiling Strobe, Clear lens

**EN-CSTC**

## Ceiling or Wall Mounted Speaker

Ceiling/Wall Speaker, 25 Vrms or 75 Vrms

**EN-CWSP**



**EN-SM**



**EN-SMBR**



**EN-SMBS**